



# Automotive Inertia Brake Dynamometer

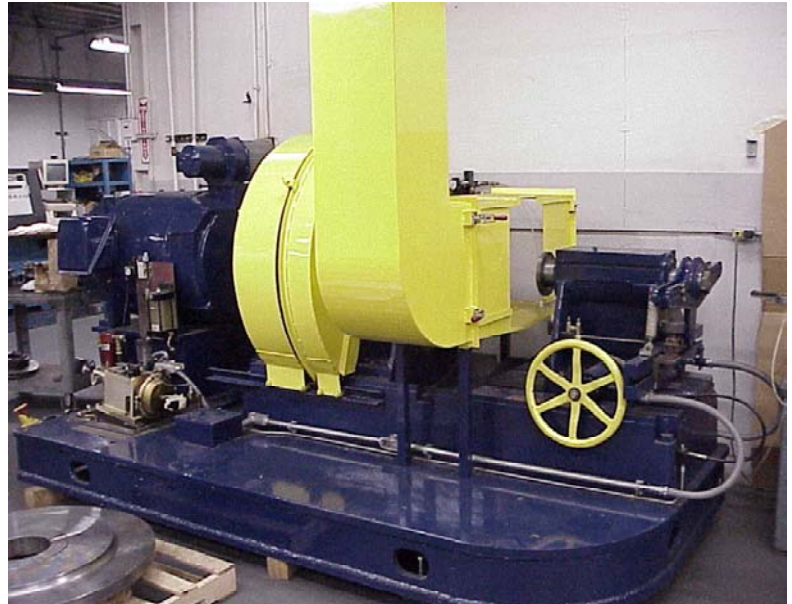
## Model 2628

Reconditioned dynamometers can provide a low cost solution to testing needs while reducing delivery time.

This dynamometer can be enhanced with various options to meet specific testing needs. Options include inertia, brake enclosure, cooling air or environmental conditioning, water or dust spray, to name a few.

The dynamometer controls are designed to enable close correlation with existing certification of research & development type test protocols. The advanced features of our ProLink software package offers operator dependent control or fully automatic unattended operation. All primary operating functions are performed at the dynamometer station including selection of test parameters, control modes, display of pertinent data, monitoring of all test functions and execution of desired test sequences.

*For more information on Reconditioned Dynamometers and available options, or other new or reconditioned test equipment, contact LINK at (734) 453-0800 or [sales@linkeng.com](mailto:sales@linkeng.com)*



### Dynamometer Specifications

Control System	ProLink Windows
Base	Single Piece Construction
Inertia System	
Min Mechanical Inertia	5 kgm <sup>2</sup> (3 slug-ft <sup>2</sup> )
Max Mechanical Inertia	68 kgm <sup>2</sup> (50 slug-ft <sup>2</sup> )
Max Inertia	109 kgm <sup>2</sup> (80 slug-ft <sup>2</sup> ) w/ I-sim
Simulated Inertia	+/- 41 kgm <sup>2</sup> (30 slug-ft <sup>2</sup> )
Main Drive	
DC Motor	149 kW (200 HP)
Speed / Max Testing Speed	1200 RPM/137 kph@300mm RR
Max. Wheel Load	730 kg (1610 lbs)
Torque Measurement	4000 Nm (36,000 in-lbs)
Air over Brake Fluid Apply	
Max. Brake Pressure	207 Bar (3000 psi)
Max. Pressure Increase	483 Bar/sec ( 7000 psi/sec)
Temperature Measurement	4 non-rotating and 4 rotating

### Features

- Reconditioned Dynamometer
- ProLink Controls
- One Year Warranty—same as New
- Rapid Delivery Time
- Attractive Price

**Disclaimer:**

Information presented in this brochure is for informational purposes only. Link Engineering Company reserves the right to make changes, alterations and substitutions to the machines, components or other information presented in this brochure without prior notice. For the latest information contact Link Engineering Company.

Equipment pictured in this brochure may be shown with safety equipment removed or disabled for purposes of illustration. Equipment must never be operated with safety equipment removed or disabled.

**Single Source for Testing Equipment and Services Across America and Around the World**

Link Engineering

734-453-0800

www.linkeng.com

Asia • Europe • North America • South America