

Model 1048-L Single End Stator Lacing Machine

Model 1048-L



This Single End Lacer incorporates the latest in servo motor and computer control technology to provide high quality lacing of large stators up to 21.5" (546 mm) Outside Diameter and 24" (610 mm) Stack Height.

In a few seconds, this flexible Lacer can adapt to a wide range of stators with different Outside Diameters, Stack Heights, Coil-end turn Heights and Stitch Patterns, without any mechanical adjustments.

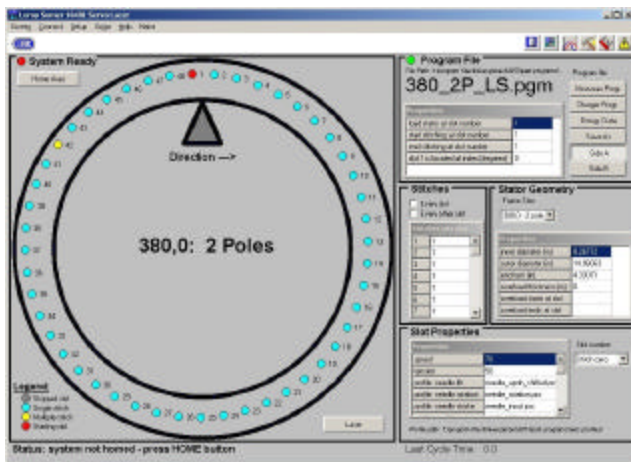
Link Lacers offer the unique diamond stitch pattern for tight lacing, complete wire coverage and maximum bore clearance. A rugged, proven design and high quality construction provide many years of reliable service.

The Link Model 1048-L Single End Stator Lacer separately laces each end of large electric motor stators to perform all of the critical needle and cord guide motions. Extra heavy-duty construction and grease lubrication provide many years of reliable operation.

Standard features include the windows based computer control system which facilitates a variety of multiple-stitch lacing patterns, accurate control of speeds up to 60 stitches per minute and programmable control of cord tension.

The standard in-line conveyor with an air-operated lift-and-lower mechanism, eliminates the need for the operator to lift heavy stators and improves productivity and safety.

Model 1048-L Single End Stator Lacing Machine



The intuitive Windows-based control system, with graphical operator interface, enables rapid creation, editing, storage and retrieval of thousands of specific lacing programs. This system controls the motions of the six servomotors, the electric cord tension, and includes operator alerts, fault diagnostics and a complete 'help' system.



The interchangeable shoe arbor allows the operator to change between different Inside Diameter stators without any tools.

Specifications

Stator O.D. (max)	21.5" (546 mm)
Stator I.D. (min)	8" (203 mm)
Stack Height (max)	5" to 24" (127 mm to 610 mm)
Coil Height (max)	10" (254 mm)
Stitch Rate	60 per minute
Motors	(6) Servo Motors
Air Supply	80 psi (5.5 bar)
Weight (approx)	6500 lbs (2955 kg)
Dimensions	137" (3.48 m) length 53" (1.35 m) width 105" (2.67 m) height

Standard Features

- Windows based controls
- Six servo motors
- Automatic knot preparation
- Electronic cord tension control
- Conveyor loading system
- Interchangeable shoe arbor
- Laser beam stator alignment
- Air-jet cord threading
- Horizontal or vertical cord spools
- Grease lubrication system