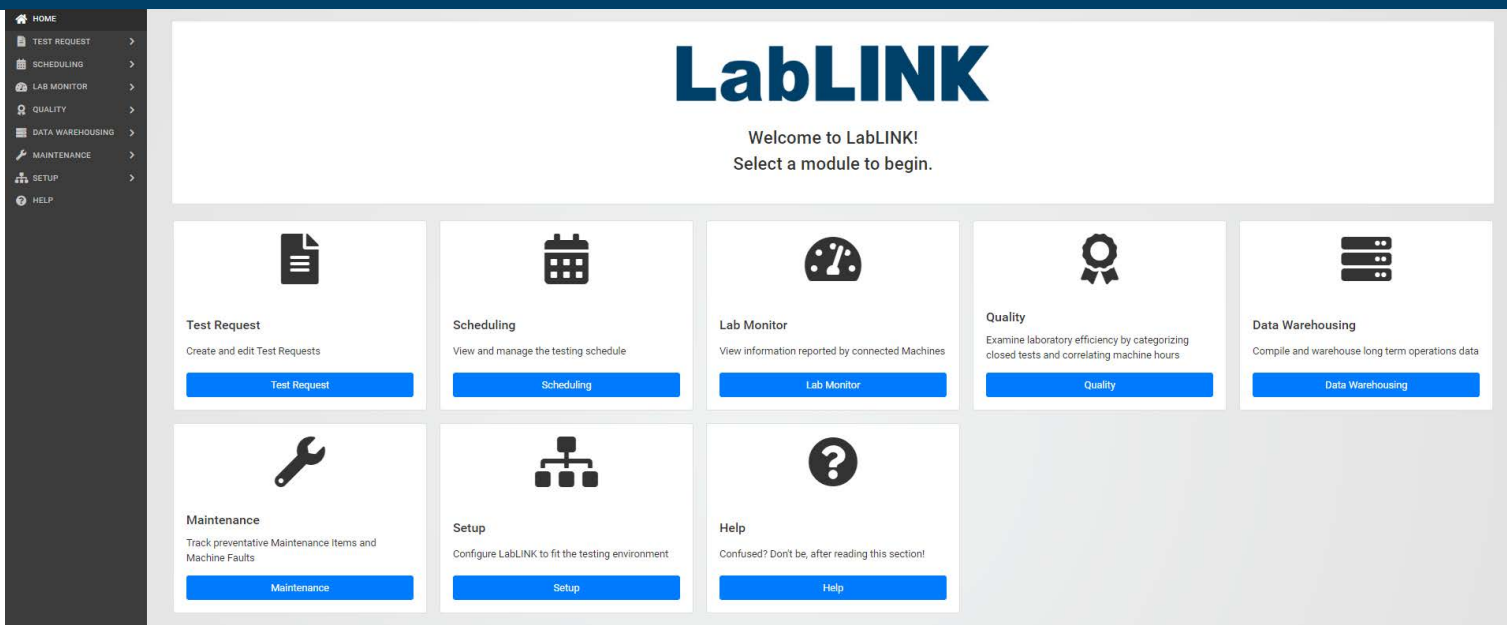




LabLINK

Laboratory Information Management System





Product Overview

LabLINK is THE complete laboratory information management system (LIMS) enabling labs to streamline testing, create test requests, schedule resources, monitor asset utilization, and data mine in real time. Unlike other LIMS products, LabLINK actively monitors the status of connected equipment and provides dynamic scheduling updates based on actual equipment run-time. This functionality is further enhanced through an integrated notification and alert system. If you are conducting testing in a laboratory environment, we are confident that LabLINK will streamline processes and increase efficiency.

LabLINK is a browser-based application accessible by many devices. Whether you are viewing the status of your laboratory from your work PC or checking out your operations from your iPhone or Android device, LabLINK provides multi-platform access to the information you need when you need it.

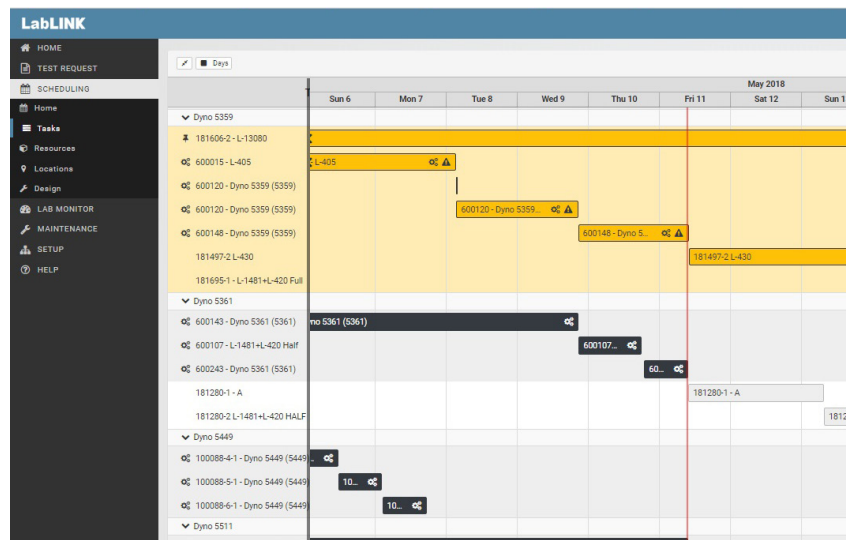
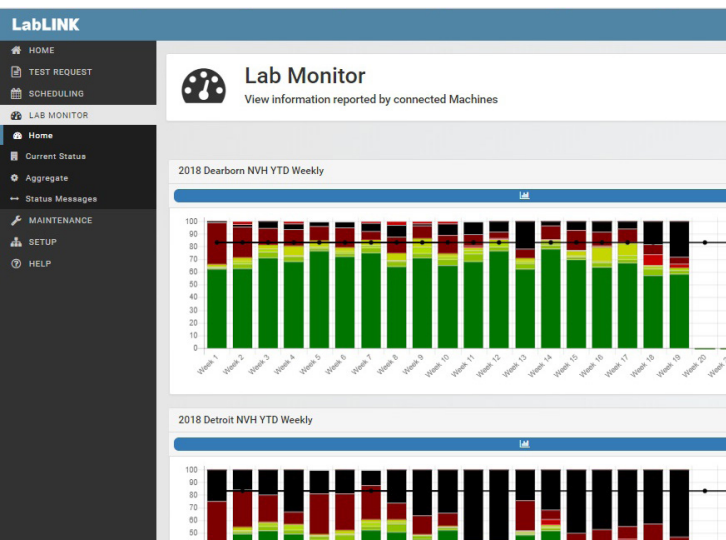
LabLINK was designed to work across a range of industries, platforms and business systems. LabLINK is compatible with ProLINK and non-ProLINK test equipment. It can also be installed as a stand-alone product with no equipment interface. LabLINK is built to be customizable and can be easily integrated into existing business systems such as ERP's or other business databases.

Application Modules

LabLINK is comprised of five main modules. The program can be implemented as a complete package or as standalone modules with the ability to add modules in the future. This enables you to create a customized solution based on your budget, needs and priorities.

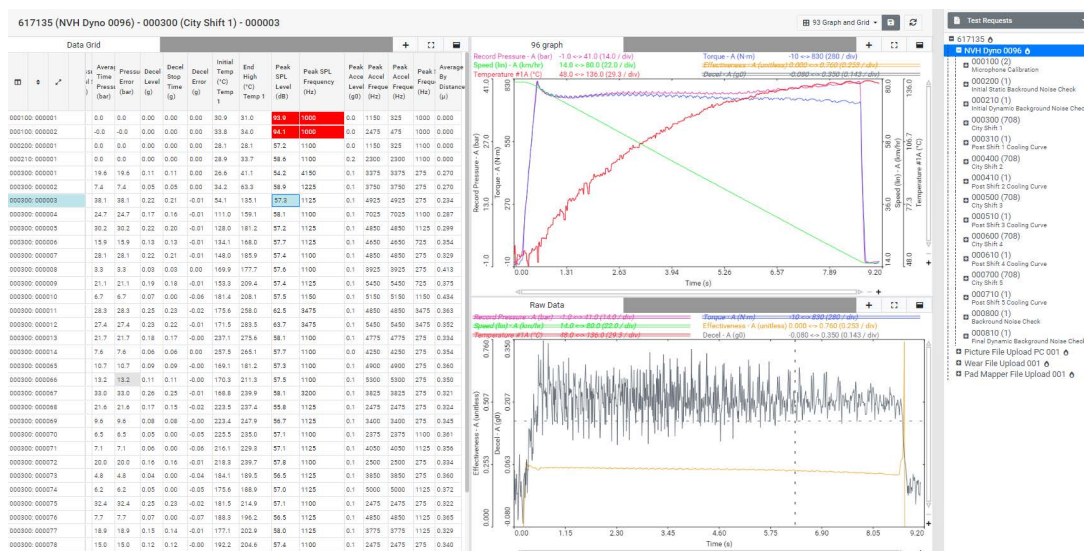
1. **Test Request Module:** An intuitive interface for creating test requests in the laboratory
2. **Scheduling Module:** Serves as a user-friendly mechanism to organize, view, and control all scheduled tasks within the laboratory
3. **Lab Monitor Module:** Provides real-time and historical views of machine status and efficiency through the use of customizable charts that can be created on the fly or saved as favorites
4. **Maintenance Module:** Acts as a single-point of reference for tracking the maintenance status of all machines
5. **Data Warehouse Module:** Provides extensive data management and analysis capability across a range of data formats including ProLINK, TDMS, CSV and others. Automatically archive "cold data" to a long-term storage repository whether on premises or in the cloud.

2 Test Smarter.



Key Benefits

- Broad user base including our own global labs, OEMs, Tier One suppliers, and others
- Developed specifically for lab management: Fits precisely with the needs of the customer while streamlining processes and enhancing efficiency. Manage an entire lab from nearly any device.
- Comprehensive lab KPI visibility: View real-time machine status and historical equipment utilization, zero in on quality concerns, monitor test request status, receive automated maintenance reminders, and more
- Fully documented Application Programming Interface (API) supports integration with existing business systems and customizations that further extend and enhance LabLINK's value to the organization
- Installation, setup, training, and support provided by an implementation team with extensive laboratory testing experience



Data Warehouse:
Test Data Analysis



Test Request Module

The Test Request Module enables you to create an unlimited range of customized test request templates that can be controlled and deployed throughout your organization.

KEY MODULE FEATURES

- Customizable test request interface
- Integrates with ProLINK and auto-populates test header information through a database connection
- Stand alone or ERP integration capability
- Interacts with Scheduling Module; created test requests become objects that are applied to the laboratory schedule with predetermined test durations

Scheduling Module

The Scheduling Module uses GANTT-style views with an intuitive drag-and-drop interface.

KEY MODULE FEATURES

- Test requests become drag-and-drop objects that can be easily placed on the GANTT-style timeline with prescribed durations that are automatically updated based on actual run-time or manually adjusted as needed
- Aligns test request requirements to machine capabilities
- Scheduling interdependency is configurable between multiple resources such as test equipment and fixtures

Lab Monitor Module

The Lab Monitor Module provides a view into machine status and efficiency. Through the use of customizable downtime codes, efficiency metrics are reported in a common format across the organization using an intuitive stacked bar chart.

KEY MODULE FEATURES

- Real-time status, utilization and efficiency views within a laboratory or across several laboratories
- Standardized reporting out of the box with the ability to customize to suit the needs of your organization
- Can be easily interfaced with all types of equipment, with advanced features offered through ProLINK connected equipment
- Configurable alerts relating to equipment status sent via email



Example of a customized test request template

[illegible]

List of test requests on database

[illegible]

Data Warehouse Module

The Data Warehouse Module is now available for customers and features comprehensive data management and analysis capabilities.

KEY MODULE FEATURES

- Acquired test data from LINK or non-LINK equipment can be appended to a LabLINK test request providing a comprehensive resource for immediate analysis, automated reporting, or historical reference
- Data analysis capability is available directly in the LabLINK UI for ProLINK, TDMS, CSV, and other data formats
- Extensive data management capabilities include hot, warm, and cold data states with configurable automated cold data management for local or cloud-based storage volumes

Maintenance Module

The Maintenance Module provides a centralized view of equipment maintenance status.

KEY MODULE FEATURES

- Acts as a single point of reference for the maintenance status of all machines
- Interfaces with maintenance functionality built into ProLINK
- Interfaces with Scheduling Module to automatically suggest maintenance periods

Equipment Connectivity

LabLINK connectivity modules provide trouble-free integration of non-LINK equipment.

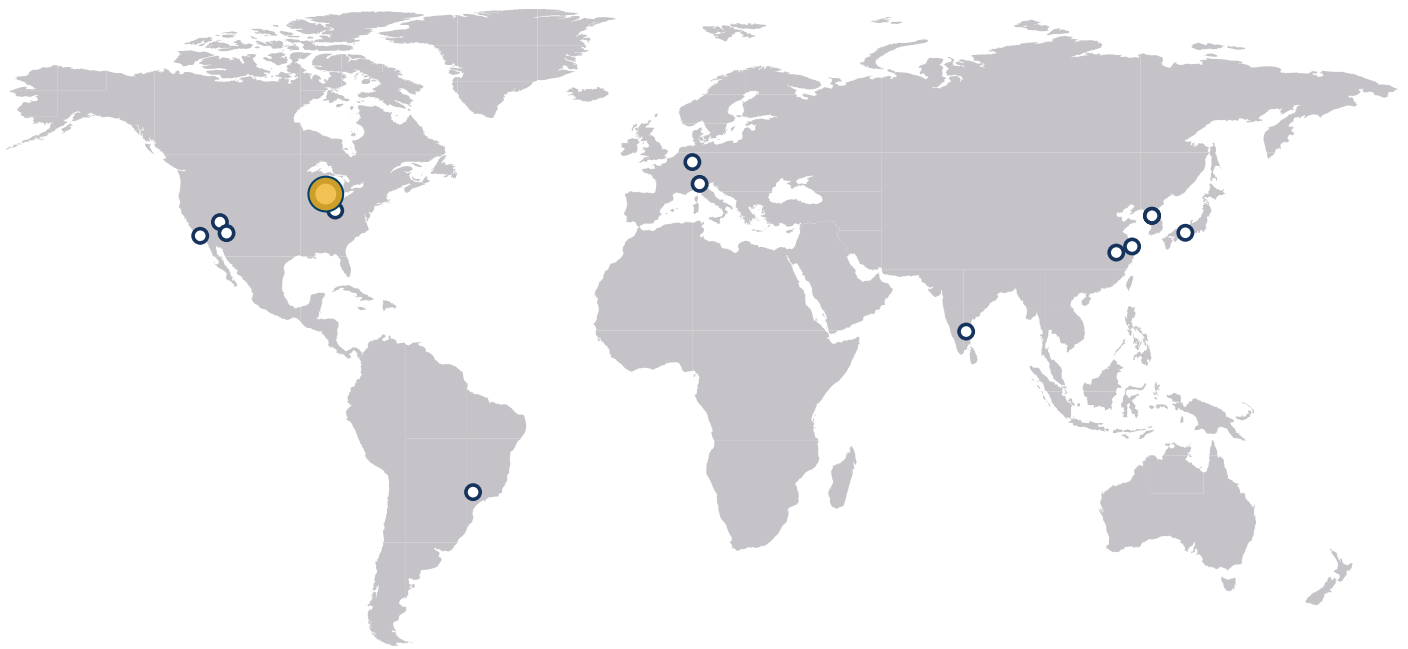
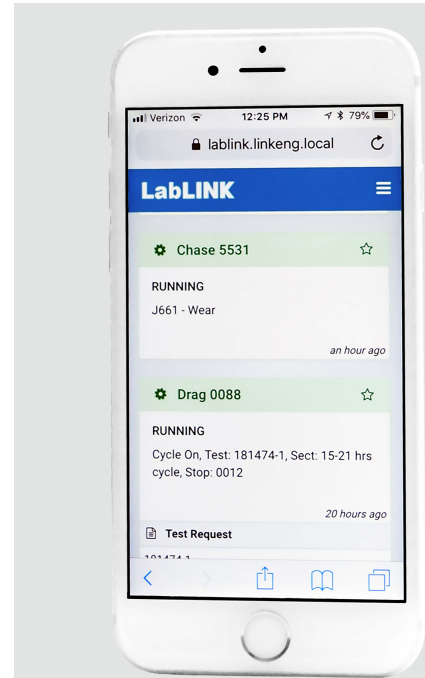
Link Engineering Company

Link Engineering Company designs and manufactures precision test equipment, and provides comprehensive laboratory and vehicle level testing services. Our specialty is developing innovative custom solutions.

Visit www.linkeng.com
or call 1-734-GET-LINK



PROUDLY SERVING THESE INDUSTRIES



www.linkeng.com